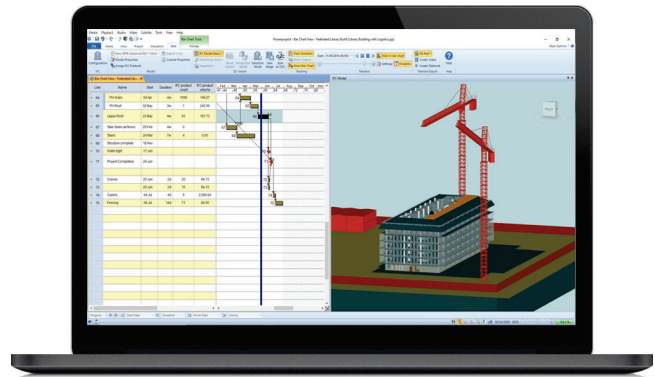




## Powerproject BIM

Use the power of 4D planning for more rigorous scheduling

Powerproject BIM is an integrated module for Powerproject which enables you to easily link the tasks in your project plan with 3D model components for 4D planning in one application. This makes it ideal for tendering and progress monitoring.



### Why choose Powerproject BIM?

- Identify problems that may not be visible via traditional schedules
- Run scenarios to assess feasibility of execution and find the best solutions
- See the impact in the 3D view as you update the Gantt chart
- Study how the build process will appear at different stages through the project
- Integrate as-built information
- Create better tenders, faster

### Quick to learn with easy navigation

- Easily create your project plan from your 3D model
- Fully integrated within familiar Powerproject interface
- 'Drag and drop' objects between model and Gantt chart
- View models externally and internally
- Compare easily with split screen functionality

### Improve collaboration across teams

- Share views easily with free project viewer
- Export animations to video and show a timeline view of the build sequence
- Save images to clearly show each build stage
- Keep everyone up-to-date with one clear view comparing planned versus actual

### 4D planning for planners

